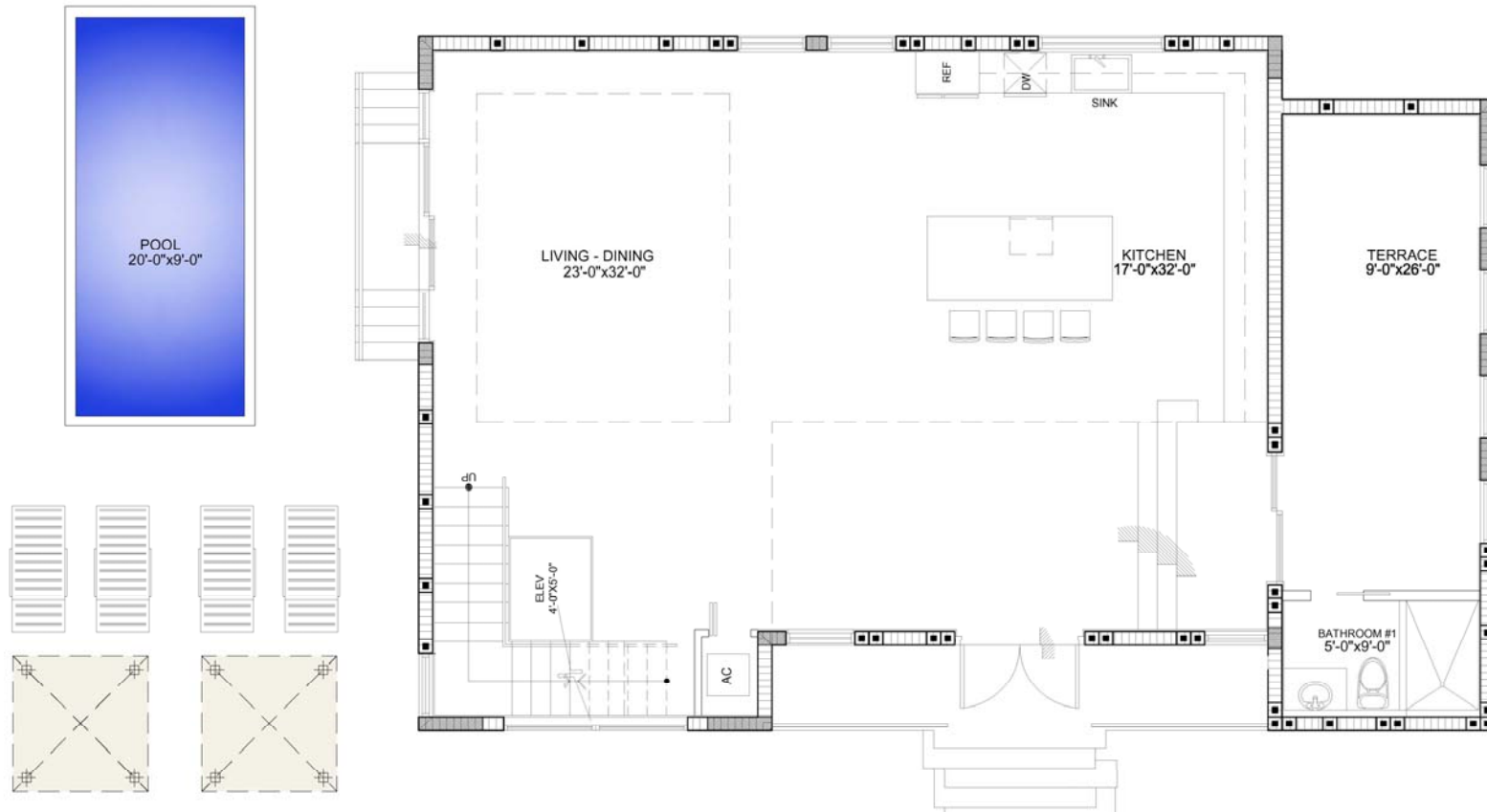


RESIDENCE

Total A/C:	3,750 ft ²	348.75 m ²
Garage:	700 ft ²	65.10 m ²
Terrace:	290 ft ²	26.97 m ²
Rooftop:	1,316 ft ²	122.39 m ²
Total:	6,056 ft²	563.21 m²

UNDERGROUND PARKING & BASEMENT



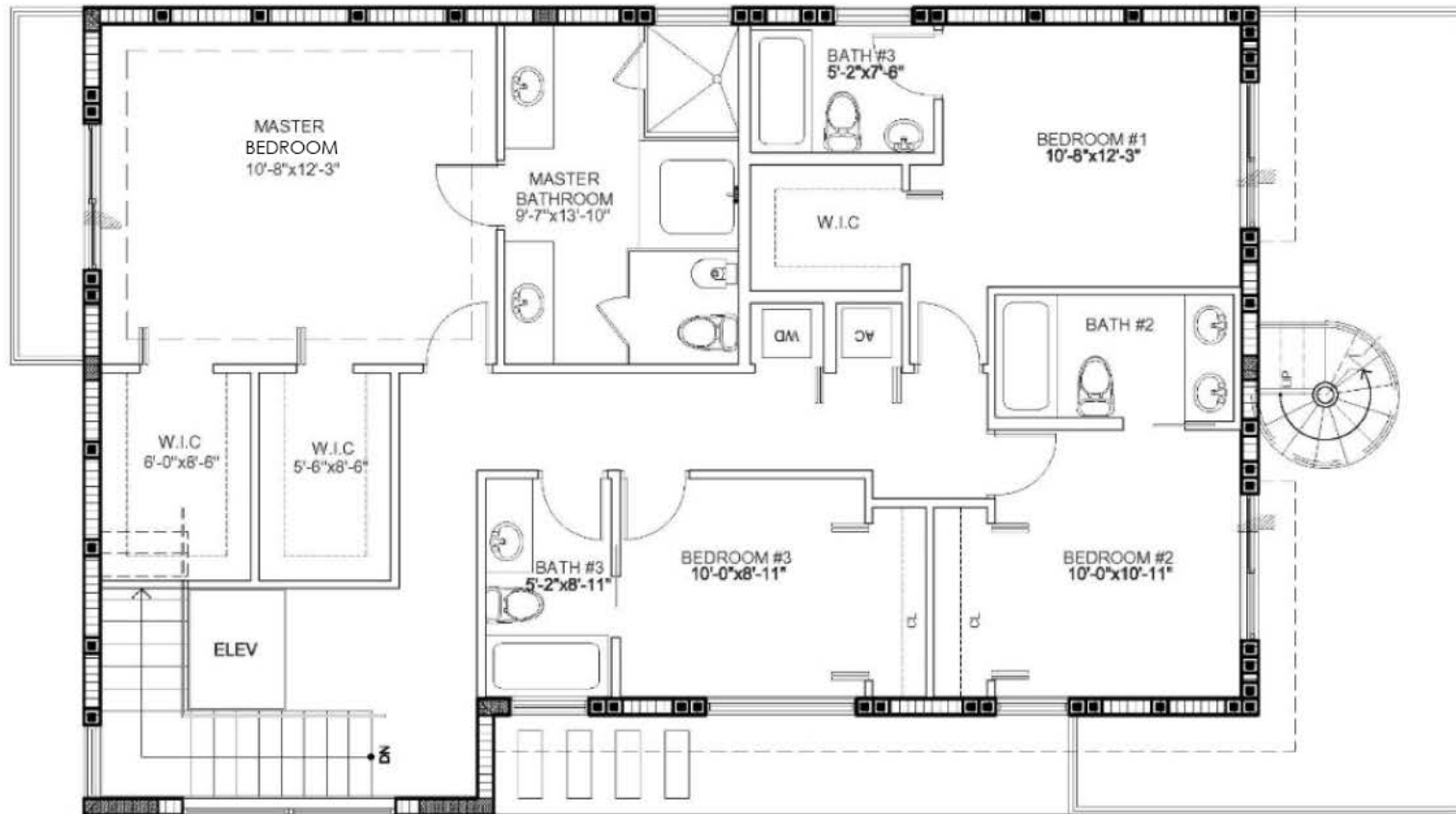


RESIDENCE

Total A/C:	3,750 ft ²	348.75 m ²
Garage:	700 ft ²	65.10 m ²
Terrace:	290 ft ²	26.97 m ²
Rooftop:	1,316 ft ²	122.39 m ²
Total:	6,056 ft²	563.21 m²

GROUND FLOOR



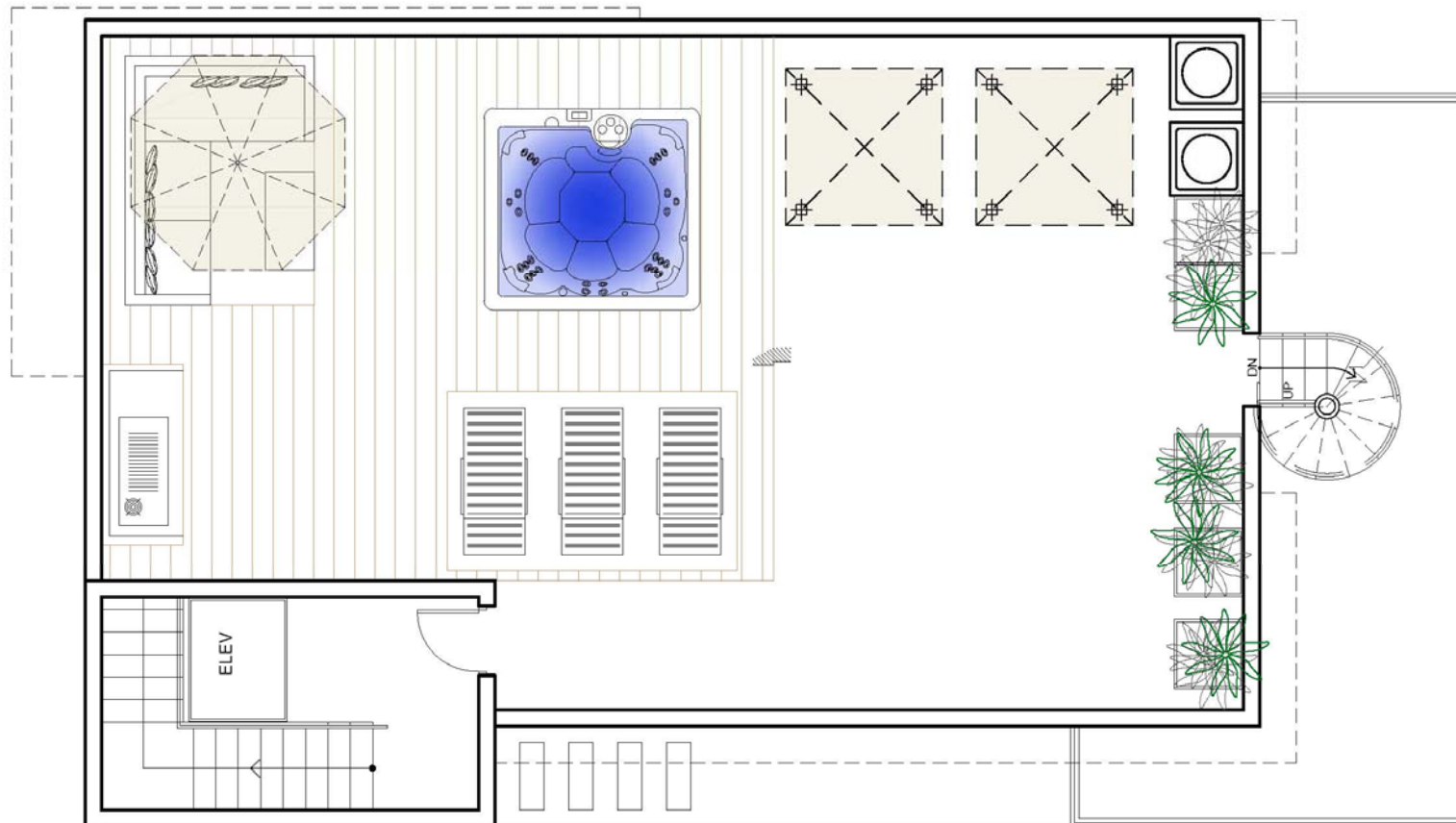


RESIDENCE

Total A/C:	3,750 ft ²	348.75 m ²
Garage:	700 ft ²	65.10 m ²
Terrace:	290 ft ²	26.97 m ²
Rooftop:	1,316 ft ²	122.39 m ²
Total:	6,056 ft ²	563.21 m ²

SECOND FLOOR





RESIDENCE

Total A/C:	3,750 ft ²	348.75 m ²
Garage:	700 ft ²	65.10 m ²
Terrace:	290 ft ²	26.97 m ²
Rooftop:	1,316 ft ²	122.39 m ²
Total:	6,056 ft²	563.21 m²

ROOFTOP TERRACE

