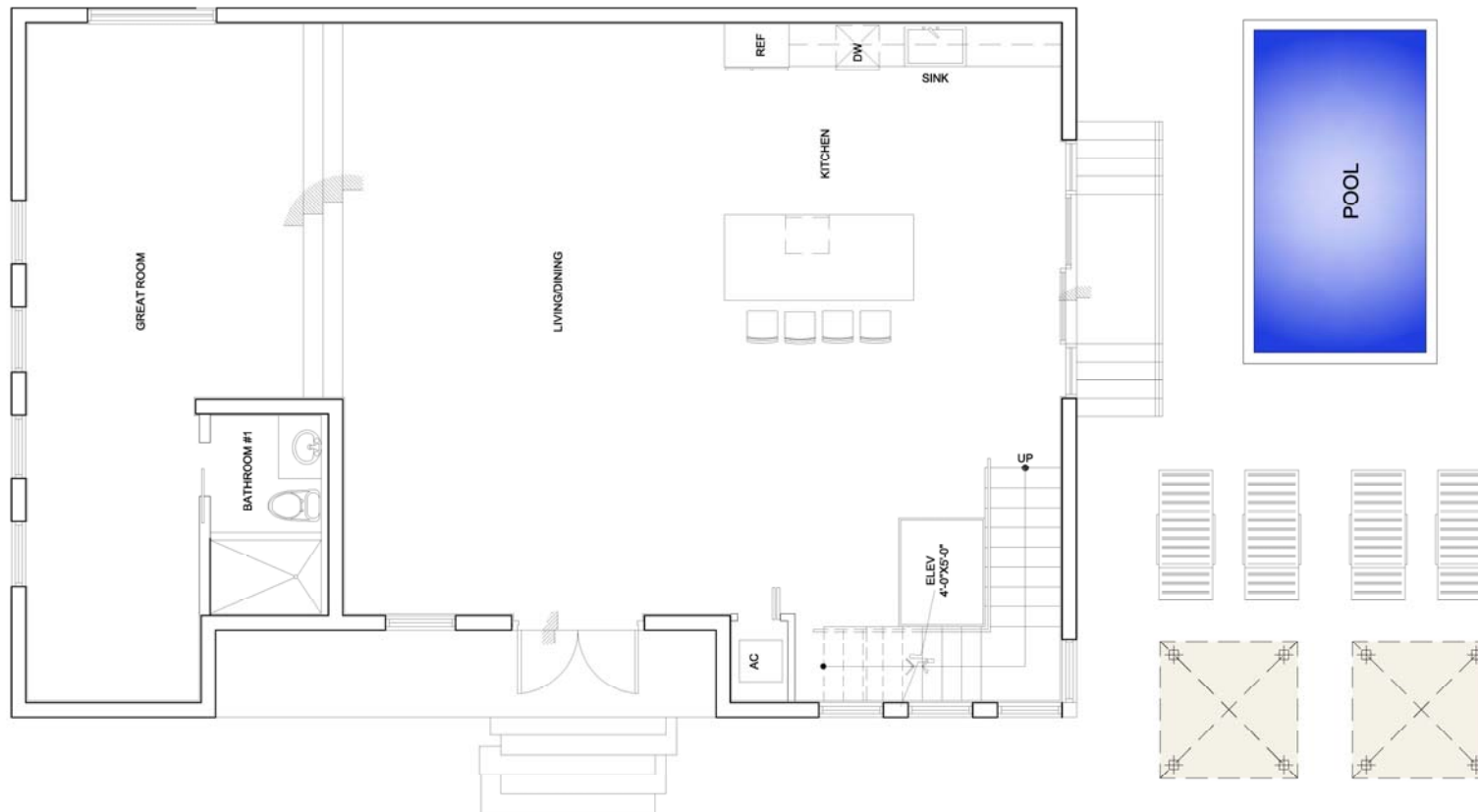


RESIDENCE

Total A/C:	3,606 ft ²	335.36 m ²
Garage:	700 ft ²	65.10 m ²
Terrace:	290 ft ²	26.97 m ²
Rooftop:	1,344 ft ²	124.99 m ²
Total:	5,940 ft²	552.42 m²

UNDERGROUND PARKING & BASEMENT



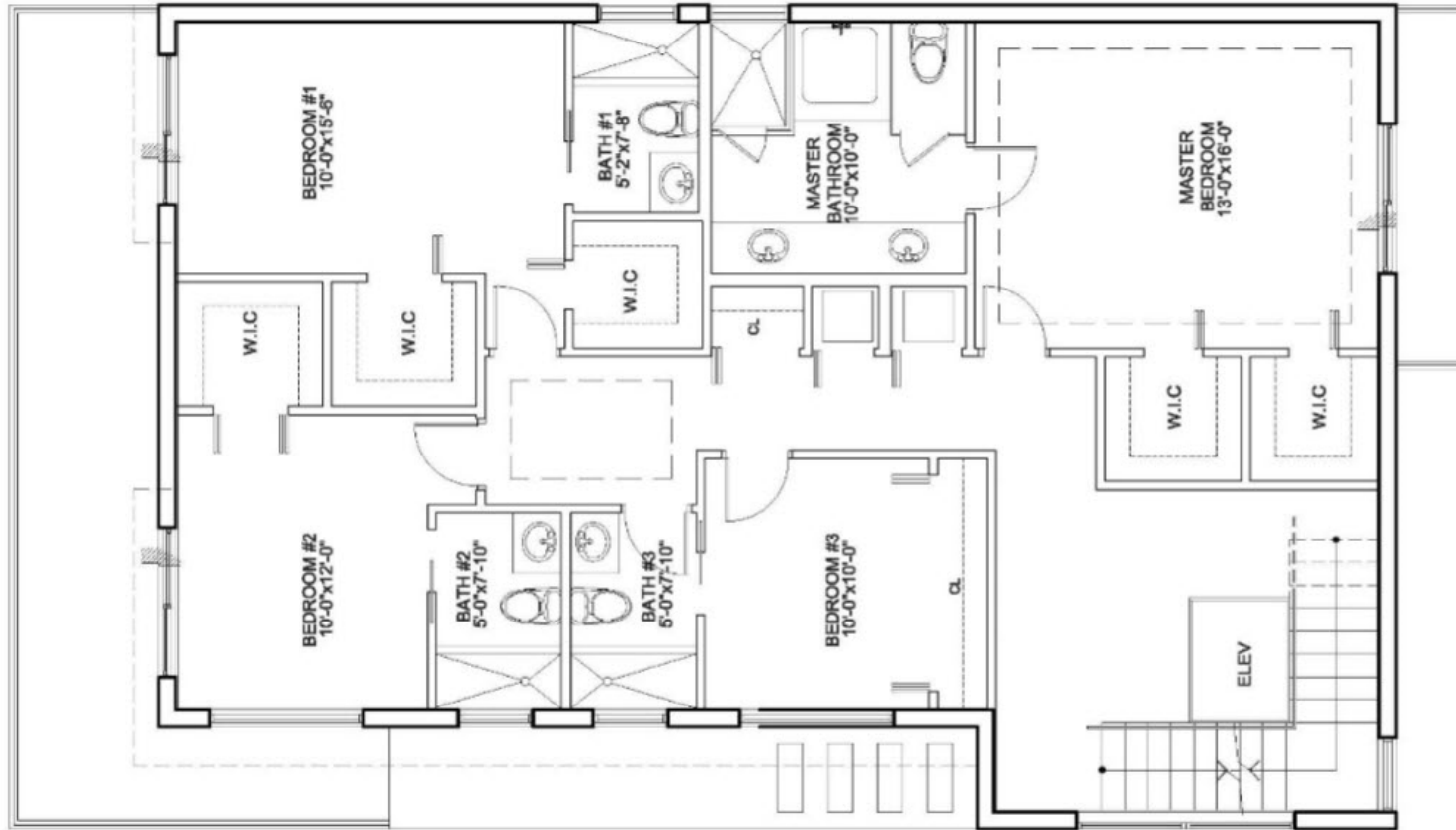


RESIDENCE

Total A/C:	3,606 ft ²	335.36 m ²
Garage:	700 ft ²	65.10 m ²
Terrace:	290 ft ²	26.97 m ²
Rooftop:	1,344 ft ²	124.99 m ²
Total:	5,940 ft²	552.42 m²

GROUND FLOOR



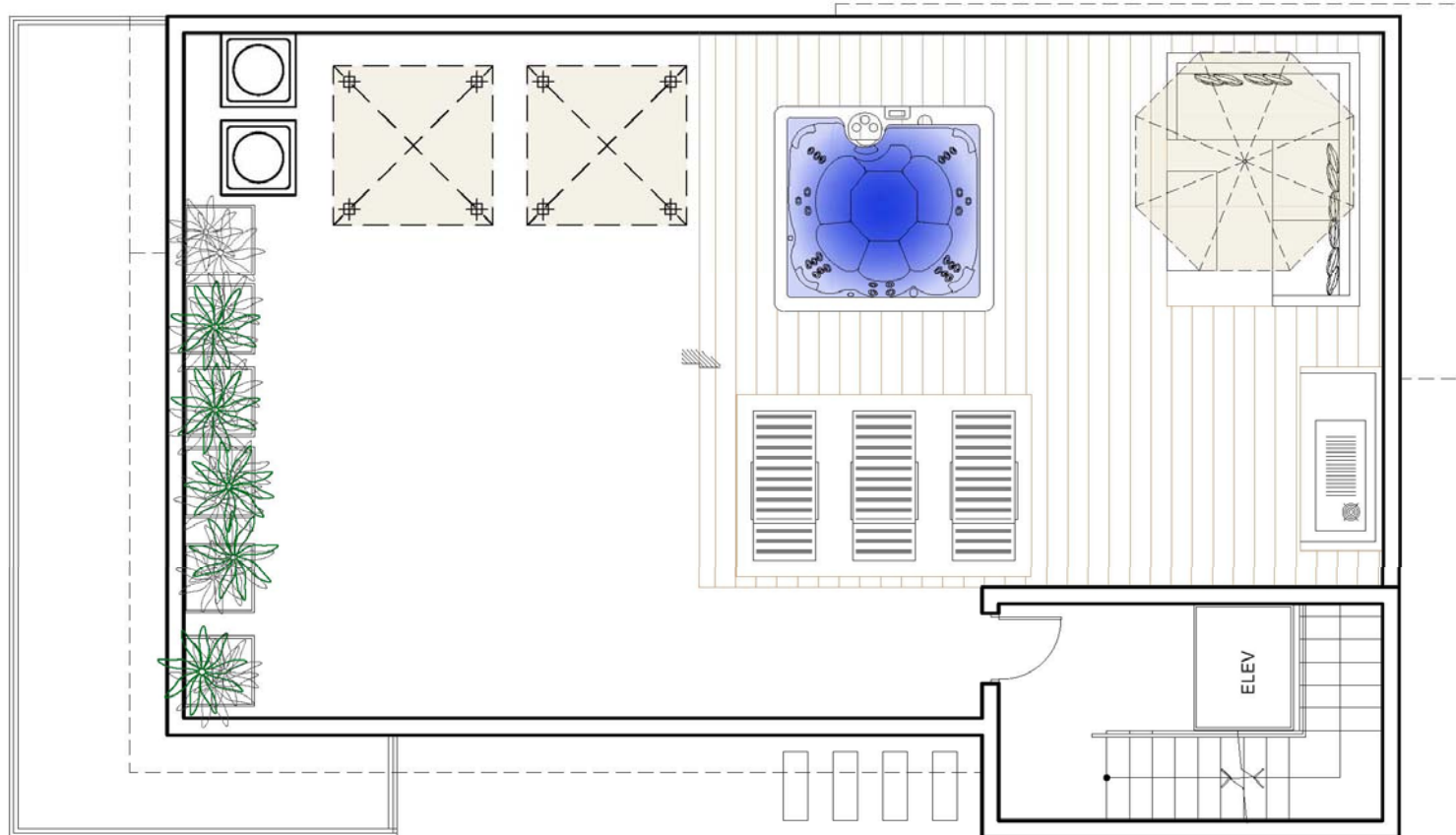


RESIDENCE

Total A/C:	3,606 ft ²	335.36 m ²
Garage:	700 ft ²	65.10 m ²
Terrace:	290 ft ²	26.97 m ²
Rooftop:	1,344 ft ²	124.99 m ²
Total:	5,940 ft²	552.42 m²

SECOND FLOOR





RESIDENCE

Total A/C:	3,606 ft ²	335.36 m ²
Garage:	700 ft ²	65.10 m ²
Terrace:	290 ft ²	26.97 m ²
Rooftop:	1,344 ft ²	124.99 m ²
Total:	5,940 ft²	552.42 m²

ROOFTOP TERRACE

